



Part Number : [14600052](#)

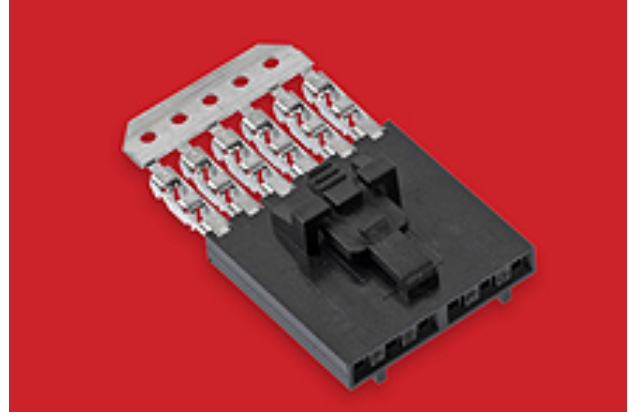
Product Description : 2.54mm Pitch SL Insulation Displacement Connector Assembly, Female, Single Row, Version G, Positive Lock, Wire Size 24 AWG, 3.81 µm Tin/Lead (SnPb), 5 Circuits

Series Number : 70400

Status : Active

Product Category : Connector Housings

Engineering Number : A-70400-0144



Documents & Resources

Drawings

[014600052_sd.pdf](#)


[PK-70873-0001-001.pdf](#)

3D Models and Design Files

[014600052_stp.zip](#)

Product Environment Compliance

Compliance

GADSL/IMDS	Compliant with Exemption 44; 33
China RoHS	
EU ELV	Not Relevant
Low-Halogen Status	Not Low-Halogen per IEC 61249-2-21
REACH SVHC	Not Contained per D(2024)4144-DC (27 June 2024)
EU RoHS	Compliant per EU 2015/863

Multiple Part Product Compliance Statements

- Eu RoHS
- REACH SVHC
- Low-Halogen

Multiple Part Industry Compliance Documents

- IPC 1752A Class C
- IPC 1752A Class D

- Molex Product Compliance Declaration
- IEC-62474
- chemSHERPA (xml)

EU RoHS Certificate of Compliance

Part Details

General

Status	Active
Category	Connector Housings
Series	70400
Description	2.54mm Pitch SL Insulation Displacement Connector Assembly, Female, Single Row, Version G, Positive Lock, Wire Size 24 AWG, 3.81µm Tin/Lead (SnPb), 5 Circuits
Comments	Terminals Preloaded
Component Type	Housing
Product Family	SL Modular Connectors
Product Name	SL
UPC	800753605589

Agency

CSA	LR19980
UL	E29179

Electrical

Voltage - Maximum	250V
-------------------	------

Physical

Circuits (Loaded)	5
Color - Resin	Black
Durability (mating cycles max)	25
Entry Angle	Vertical
Flammability	94V-0
Gender	Female
Glow-Wire Capable	No

Lock to Mating Part	Yes
Material - Metal	Phosphor Bronze
Material - Plating Mating	Tin
Material - Plating Termination	Tin
Material - Resin	Polyester Alloy
Net Weight	0.943/g
Number of Rows	1
Packaging Type	Tube
PCB Retention	None
Pitch - Mating Interface	2.54mm
Plating min - Mating	3.810µm
Plating min - Termination	1.905µm
Polarized to Mating Part	Yes
Stackable	Yes
Temperature Range - Operating	-40° to +105°C
Termination Interface Style	IDT or Pierce
Wire/Cable Type	Discrete Wire, Ribbon Cable
Wire Insulation Diameter	1.35mm max.
Wire Size (AWG)	24

Mates With / Use With

Mates with Part(s)

Description	Part Number
SL Single Row Housing Panel Mounts	<u>70018</u>
SL Single Row Crimp Housings	<u>70107</u>
SL Vertical Single Row Headers	<u>70543</u>
SL Vertical Single Row Headers	<u>70545</u>
SL Right-Angle, Single Row, Low Profile Headers	<u>70553</u>
SL Right-Angle Single Row Headers	<u>70555</u>

Application Tooling

Global

Description	Part Number
IDT Discrete Handtool Module	<u>621000700</u>
Ribbon Cable Tool Kit, Press Not Included	<u>622016600</u>

This document was generated on Oct 04, 2024